

# Mr. Hurt Head Trauma Simulator



**Laerdal**<sup>™</sup>  
*helping save lives*



---

---

## Table of Contents

Laerdal Recommends  
4

Items Included  
4

Skills Taught  
4

Care and Maintenance  
6

Warranty  
6

Replacement Parts  
7

---

---

---

---

Mr. Hurt Head is a lifelike manikin head which realistically simulates that of an adult trauma patient. This model is X-ray opaque and is specifically designed for training professionals in the practice of identifying traumatic injuries.

As a result of quality construction and the ease of replacing individual parts, this simulator should provide many years of training when reasonable care and maintenance are practiced.

---

---

### **Laerdal Recommends:**

**Do Not Intubate!** This is not an airway management trainer.

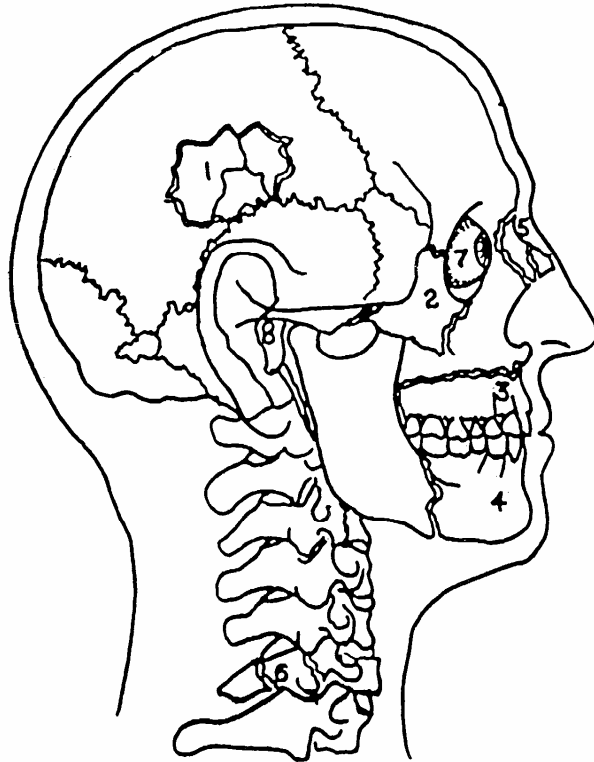
#### **Items Included:**

- (1) Mr. Hurt Head
- (1) Base

#### **Skills Taught:**

Recognition and assessment of the following lesions:

- Open depressed skull fracture (right) – (1)
- \*Le Fort III fracture (right) – (2)
- \*Le Fort I (transverse fracture; Guerin fracture) – (3)
- Bilateral mandibular fractures – (4)
- Nasal fracture – (5)
- Fracture of C-6 vertebra – (6)
- Unequal pupils – (7)
- Hemotympanum (right) – (8)
- Deviated trachea



**NOTE: This is not an airway management trainer.**

\*Surgery of Facial Fractures by Dingman-Natvig, W.B. Saunders Company, 1973.

“A HEAD AND NECK TRAUMA TEACHING MODEL”

Joseph C. Marron, M.D., and Craig Gosling, B.A.

From the Department of Neurological Surgery, University of Pittsburgh, School of Medicine and the Department of Medical Illustration, Indiana University Medical Center, Indianapolis.

### **Care and Maintenance:**

1. Clean with mild soap and water; do not submerge in cleaning fluids or water.
2. Use only on clean surface. Avoid felt tipped markers, ink pens, acetone, iodine or other staining products and avoid placing the trainer on newsprint or inked lines of any kind.
3. To ensure longevity, trainer should be cleaned after each training session and a general inspection should be conducted regularly.
4. Modules and all other parts should be drained and air-dried thoroughly before storage and disinfected when needed.
5. Articulating parts will benefit from a light application of talcum powder prior to training sessions.
6. Store properly between teaching sessions.

### **Warranty**

Laerdal Medical warrants to the purchaser that its products are free from defects in material and workmanship for a period of one (1) year from the date of purchase by the original user. During the designated one (1) year period, Laerdal Medical will, upon receipt of a product found to be defective due to materials or workmanship from the purchaser and notification in writing of the defect, at its option repair or replace any parts found to be defective or the entire product. Warranty period does not renew with replacement or repair of original product.

Products found to be defective and notification of defects may also be sent to the authorized Laerdal Medical dealer from whom the product was purchased. All postage, shipping or handling charges shall be the sole responsibility of the purchaser.

Laerdal Medical is responsible for the effects of safety, reliability and performance of its product(s) only if:

- service, repair, readjustment or modification is carried out by Laerdal Medical or persons authorized by Laerdal Medical.
- the electrical installation of the room where the product is used complies with pertinent equipment requirements.

- the product is used in the proper manner in strict compliance with its Directions for Use.

Laerdal Medical shall not be liable under this warranty for incidental or consequential damages, or in the event any unauthorized repairs or modifications have been made or attempted, or when the product, or any part thereof, has been damaged by accident, misuse or abuse. This warranty does not cover batteries, fuses, normal wear and tear, excessive use, staining, discoloration or other cosmetic irregularity which does not impede or degrade product performance.

Some states in the USA do not allow the exclusion or limitation of incidental or consequential damages, so those limitations or exclusions may not apply to you.

There are no other express or implied warranties, whether of merchantability, fitness or purpose, or otherwise, on the product, its parts and accessories.

### **Replacement Parts:**

**Product Number:**

1001475

9500-01-0011

**Description:**

Base

Wig

Please contact Customer Service Representatives for more information on Replacement Parts in other skin tones

Norway: LAERDAL MEDICAL AS  
P.O. Box 377, N-4002 Stavanger  
Tel. +47 51 51 17 00, Fax +47 51 52 35 57  
E-mail: laerdal.norway@laerdal.no

Australia: LAERDAL Pty. Ltd. (ABN 47 003 817 490)  
23 Edward Street, Oakleigh, Victoria 3166  
Tel. +61 3 9569 4055, Toll free 1800 331 565  
Fax +61 3 9569 4028, Toll free 1800 635 835  
E-mail: customer.service@laerdal.com.au

Benelux: "The Laerdal BeNeLux House"  
Dijkstraat 54, NL-5554 PS VALKENSWAARD  
Tel. +31 40 208 58 00, Fax +31 40 208 58 02  
E-mail: laerdal.benelux@laerdal.nl

Benelux: Belgium and Luxembourg  
LAERDAL BeNeLux NV  
Mechelsesteenweg 277, B-1800 VILVOORDE  
Tel. +32 2 253 36 96, Fax +32 2 253 36 90  
E-Mail: info@laerdal.be

Canada and Latin America:  
LAERDAL MEDICAL CANADA LTD.  
151 Nashdene Rd., Unit #45  
Toronto, ON, Canada, M1V 4C3  
Tel. +1 (416) 298-9600,  
Toll free 888/LAERDAL (523-7325)  
ou en français (800) 567-9987  
Fax +1 (416) 298-8016  
E-mail: savelives@laerdal.ca

Denmark: LAERDAL DANMARK  
Postbox 225, DK-8600 Silkeborg  
Tel. +45 80 333 112, Fax +45 80 333 555  
E-mail: laerdal.denmark@laerdal.no

Eastern Europe: LAERDAL C.E. EUROPE  
A-1060 Vienna, Mariahilferstr. 1d/1/3  
Tel - Fax +43 15877140, Tel. +43 15815927  
E-mail: mstam@aon.at

Far East: LAERDAL Singapore Pte Ltd  
No 1 Marine Parade Central  
#13-05, Parkway Centre Singapore 449408  
Tel. +65 63464259, Fax +65 63467523  
E-mail: admin@laerdal.com.sg

Finland: LAERDAL OY  
Vattuniemenranta 2, 00210 HELSINKI  
Puhelin +358 (0)9-612 99 80,  
Telekopio +358 (0)9-692 77 99  
E-mail: laerdal.finland@laerdal.no

France: LAERDAL MEDICAL FRANCE  
1 rue des Vergers - Bâtiment n° 5 - 69578 Limonest  
Cedex  
Tél. +33 (0)4 72 52 02 52, Fax +33 (0)4 78 35 38 45  
E-mail: laerdal.france@laerdal.no

Germany: LAERDAL MEDICAL DEUTCHLAND GmbH  
Am Loferfeld 56, 81249 München  
Tel. +49 (0)89 / 864 954-0, Fax +49 (0)89 / 864 34 84  
E-mail: info@laerdal.de

Italy: LAERDAL ITALIA s.r.l.  
Via Piero Gobetti 52/2 int.Z, 40129 Bologna  
Tel. +39 051-355587, Fax +39 051-355598  
E-mail: laerdal.italia@laerdal.no.

Japan: LAERDAL MEDICAL JAPAN K.K..  
Shinjuku IS Bldg.. 8F  
2-13-12, Shinjuku, Shinjuku-ku, Tokyo 160-0022  
Tel. 81-3-5919-2121, Fax: 81-3-5919-2122  
E-mail: laerdal.japan@laerdal.co.jp

Malaysia: LAERDAL HOSPILINE Sdn Bhd  
12 Jalan Titir 33/25, Section 33, Shah Alam Technology Park,  
40400 Shah Alam, Selangor Darul Ehsan,  
Tel +60 (3) 5122-7002, Fax +60 (3) 5122-5650  
E-mail: customer.service@Laerdal.com.my

New Zealand: LAERDAL NEW ZEALAND Ltd  
(GST Number 79-403-636)  
PO Box 302664, North Harbour, Auckland 1330  
Tel. +61 3 9564 4066, Toll free 0800 523 732  
Fax +61 3 9563 3368, Toll free 0800 528 852  
E-mail: customer.service@laerdal.co.nz

Portugal: LAERDAL ESPANA, Sucursal em Portugal  
Rua da Bela Vista à Graca, no.31 A. Escritorio 9,  
1170-054 Lisboa  
Tel. (+351)-21-816-6567, Fax (+351)-21-816-6568,  
Mob. (+351)-918765367

Spain: LAERDAL ESPANA, S.L.  
Manuel Tovar 19, 28034 Madrid  
Tel. (+34) 902-291110, Fax (+34) (91)-7291125  
E-mail: laerdal.spain@laerdal.no

Sweden: LAERDAL MEDICAL AB  
Box 2064, Paviljongvägen 3-5, 132 02 Saltsjö-Boo  
Tel. +46 (0)8-55614610, Fax +46 (0)8-55614619  
E-mail: Laerdal.sweden@laerdal.se

United Kingdom: LAERDAL MEDICAL LTD.  
Laerdal House, Goodmead Road, Orpington,  
Kent BR6 0HX  
Tel. +44 (0)1689 876634, Fax +44 (0)1689 873800  
E-mail: customer.service@laerdal.co.uk

USA  
LAERDAL MEDICAL CORPORATION  
167 Myers Corners Road, P.O. Box 1840  
Wappingers Falls, New York 12590-8840  
Tel. (800) 431-1055, +1 (845) 297-7770  
Fax (800) 227-1143, +1 (845) 298-4545  
E-mail: customerservice@laerdal.com

LAERDAL TEXAS  
P.O. Box 38, 226 FM 116 South  
Gatesville, Texas 76528-0038  
Tel. (800) 433-5539, (254) 865-7221  
Telefax (254) 865-8011  
E-mail: services@mpltx.com